



MEDICAL SCHOOL
UNIVERSITY OF MICHIGAN

Quinta Vreede
Chief Administrative
Officer, Michigan Medicine
Chief of Staff
EVPMA/Dean's Office

Marschall Runge, M.D., Ph.D.
Executive Vice President
for Medical Affairs
Dean

Sally Liaw
Senior Director
for
Executive
Communications

CLINICAL DEPARTMENT CHAIRS

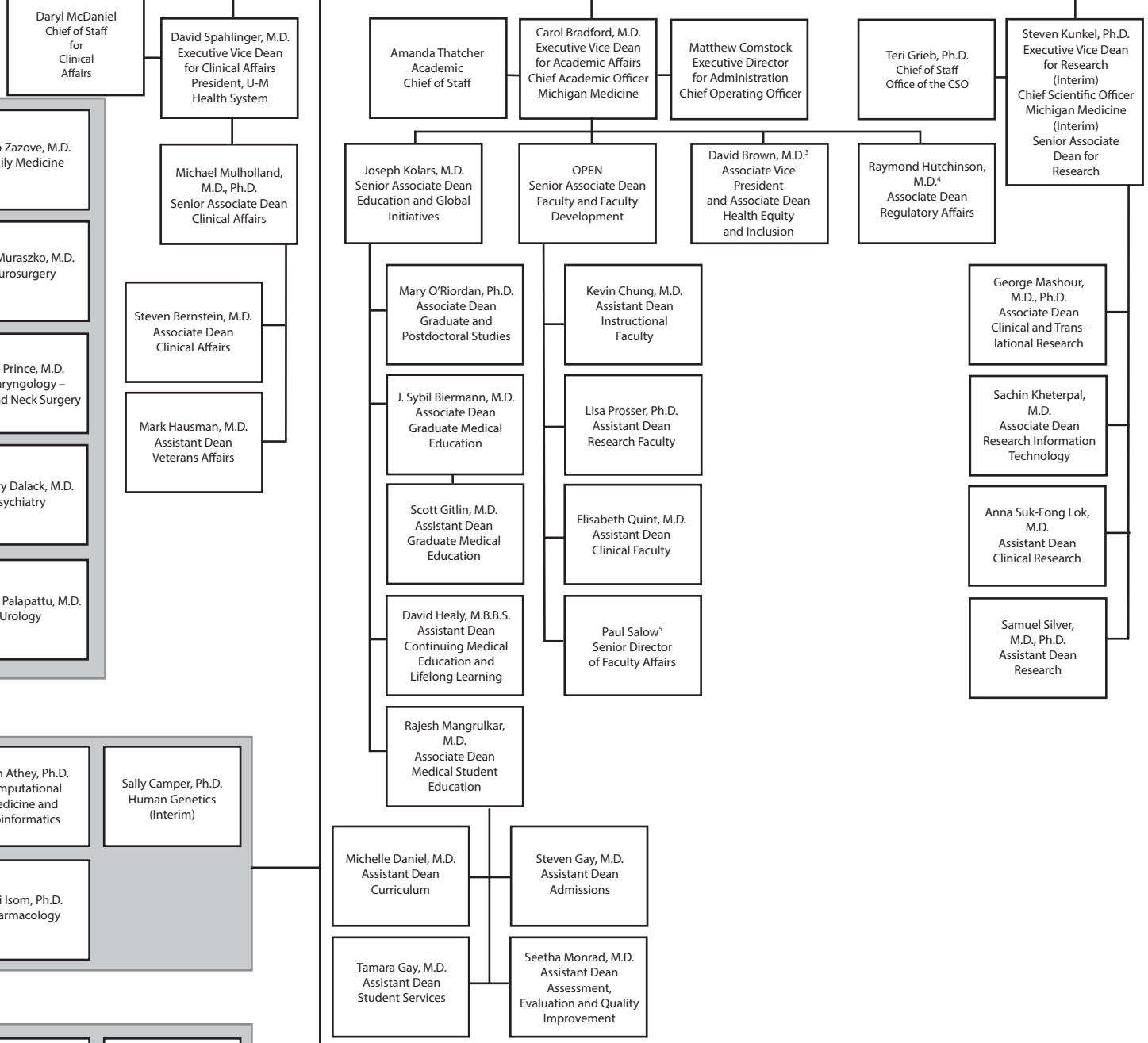
Kevin Tremper, Ph.D., M.D. Anesthesiology	Richard Prager, M.D. Cardiac Surgery (Interim)	Christopher Bichakjian, M.D. Dermatology (Interim)	Philip Zazove, M.D. Family Medicine
Robert Neumar, M.D., Ph.D. Emergency Medicine	John Carethers, M.D. Internal Medicine	Ronald Chervin, M.D. Neurology (Interim)	Karin Muraszko, M.D. Neurosurgery
Dee Fenner, M.D. Obstetrics and Gynecology	Paul Lee, M.D., J.D. Ophthalmology and Visual Sciences	Michelle Caird, M.D. Orthopaedic Surgery (Interim)	Mark Prince, M.D. Otolaryngology – Head and Neck Surgery
Charles Parkos, M.D. Ph.D. Pathology	Donna Martin, M.D., Ph.D. Pediatrics (Interim)	Edward Hurvitz, M.D. Physical Medicine and Rehabilitation	Gregory Dalack, M.D. Psychiatry
Theodore Lawrence, M.D., Ph.D. Radiation Oncology	Vikas Gulani, M.D., Ph.D. Radiology	Justin Dimick, M.D. Surgery	Ganesh Palapattu, M.D. Urology

BASIC SCIENCE DEPARTMENT CHAIRS

Phyllis Hanson, M.D., Ph.D. Biological Chemistry	Lonnie Shea, Ph.D. ² Biomedical Engineering	Pierre Coulombe, Ph.D. Cell and Developmental Biology	Brian Athey, Ph.D. Computational Medicine and Bioinformatics	Sally Camper, Ph.D. Human Genetics (Interim)
Charles Friedman, Ph.D. Learning Health Sciences	Bethany Moore, Ph.D. Microbiology and Immunology (Interim)	Santiago Schnell, D.Phil. Molecular and Integrative Physiology (Interim)	Lori Isom, Ph.D. Pharmacology	

CENTERS AND INSTITUTES¹

Kim Eagle, M.D. David Pinsky, M.D. Richard Prager, M.D. Thomas Wakefield, M.D. Frankel Cardiovascular Center ³	Eric Fearon, M.D., Ph.D. Comprehensive Cancer Center	John Ayanian, M.D., M.P.P. Institute for Healthcare Policy and Innovation	George Mashour, M.D., Ph.D. Michigan Institute for Clinical and Health Research	James R. Baker, Jr., M.D. Michigan Nanotechnology Institute for Medicine and Biological Sciences Weiser Food Allergy Center
--	---	---	---	--



Footnotes:
¹ Regental units reporting to the Dean
² Joint reporting with College of Engineering
³ Joint reporting with Senior VP and COO, Clinical Enterprise
⁴ Joint reporting with Executive Vice Dean for Research/CSO
⁵ Joint reporting with Exec. Director for Administration/COO