

Learning Systems Can Exist at Any Level of Scale

Single Organization



Network of Organizations



States/Provinces/Regions



Nation



Planet



LHS Exemplars at all Scales!

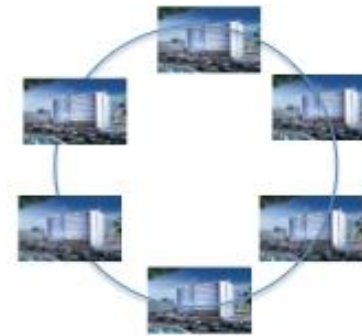
Single Organizations



In the US:

- Intermountain
- Geisinger
- Kaiser-Permanente
- Mayo
- Our peers...

Networks



In the US:

- PCORI networks
- CancerLINQ
- EpiNet
- High Value Collaborative

States/Provinces/Regions



- Quebec & BC
- Michigan & Indiana
- Northern England

Nation



- **Switzerland**
- UK/Scotland & England
- Saudi Arabia

Planet



Someday

Intermountain...

Salt La

University of Michigan
2014 Wilbert Steffy Distinguished Lecture
M3330, Medical Science I,
1137 East Catherine Street, Ann Arbor, Michigan
Wednesday, 14 May 2014, 6:00p - 7:00p

The Learning Healthcare System: We Count Our Successes in Lives

Brent C. James, M.D., M.Stat.
Executive Director, Institute for
Health Care Delivery Research
Intermountain Healthcare
Salt Lake City, Utah, USA



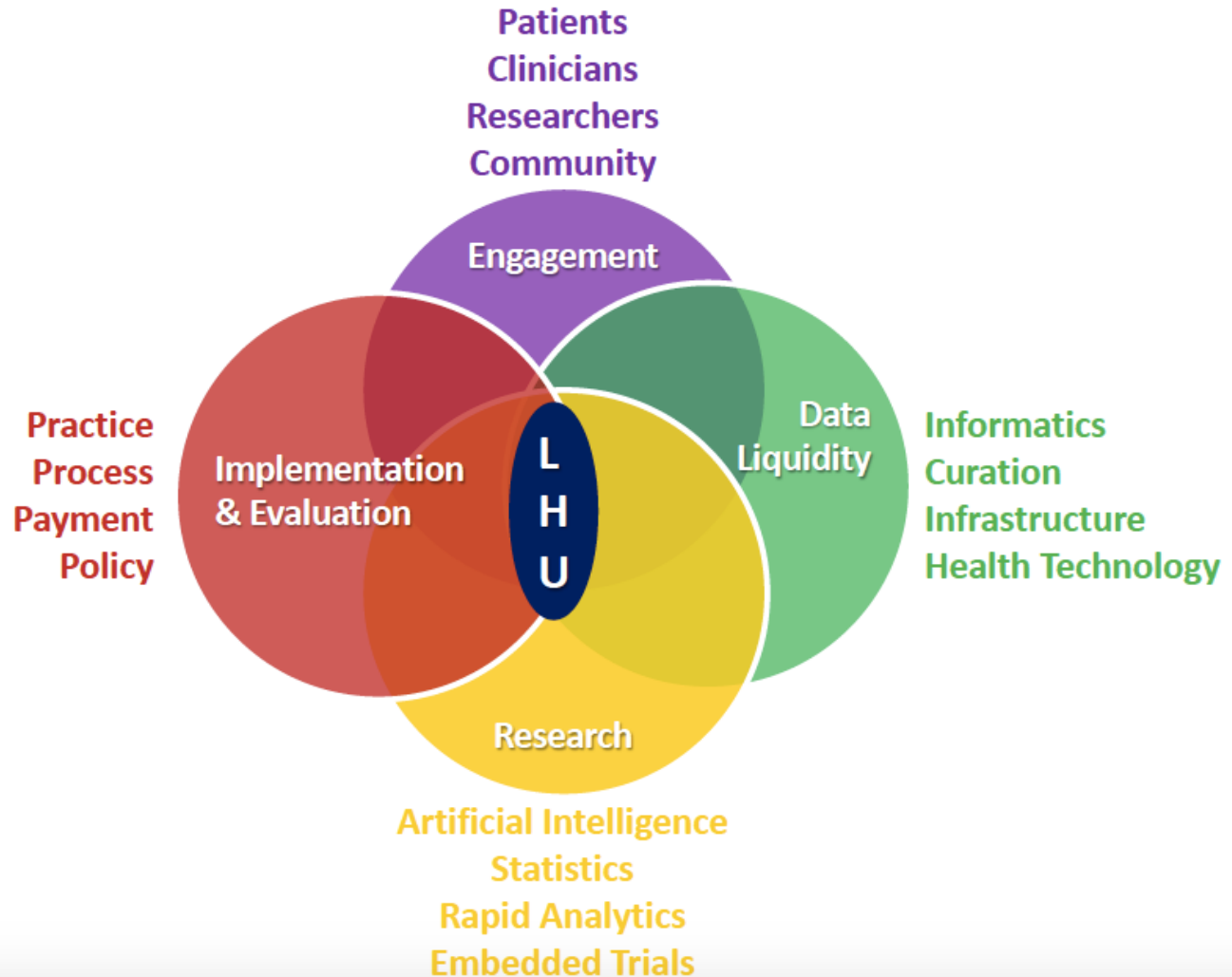
0:38 / 51:17



<https://www.youtube.com/watch?v=vHSjgslJVEk>

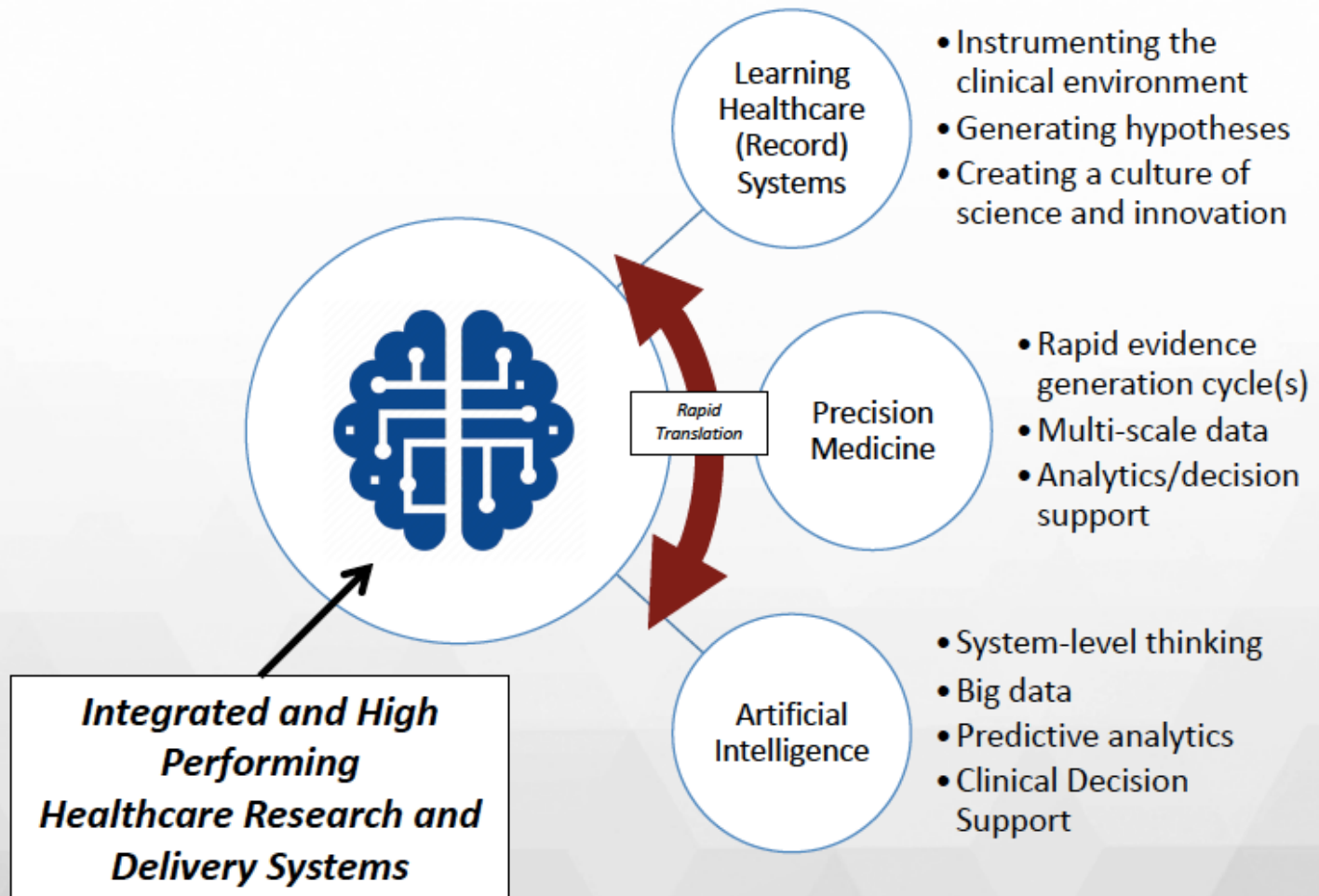
Duke...

Learning Health's Components



Washington University...

Our ultimate goal: a smarter healthcare system



Networks: Improve Care Now

Improvers wanted.

Together, we're collectively restoring the wellbeing of all kids with Crohn's disease and ulcerative colitis — changing the way medicine is practiced.

IMPROVECARENOW™

[WATCH OUR VIDEO](#)

[JOIN OUR CIRCLE](#)

“Cloning” Improve Care Now

Contract for Advancement of PCORnet Infrastructure: Development of Pilot People-Centered Communities Project - Phase I

 Sign Up for Updates to This Study



Project Summary

The Learning Healthcare System Networks Project (previously called the People-Centered Communities) will develop four pilots based on Cincinnati Children's Hospital Medical Center's successful learning network model. The learning network model supports the design, development, and implementation of data networks.

EPINET (NIMH)

NIH Announces Funding Awards for National Early Psychosis Learning Community

NIH-funded research projects aim to improve quality

The National Institutes of Health (NIH) awarded six research grants for studies to develop a learning health care system for the treatment of early psychosis. The awards are part of a broad research initiative called [Early Psychosis Intervention Network \(EPINET\)](#), which aims to develop models for the effective delivery of coordinated specialty care (CSC) services for early psychosis. The grants are administered by the National Institute of Mental Health (NIMH), part of NIH.

Scotland

Learning Health System

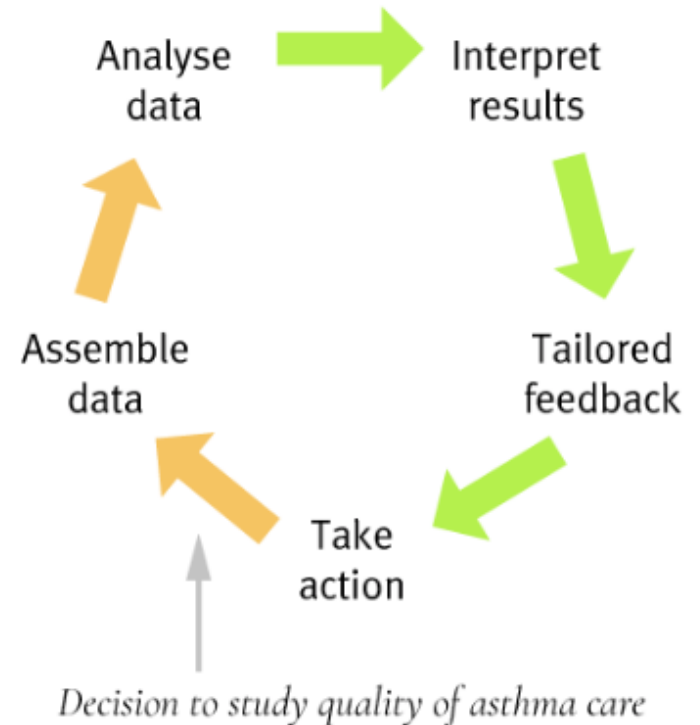
About the UK Asthma Observatory ▾

Data Catalogue ▾

Asthma Burden in the UK ▾

Hospital Admissions Data Dashboard ▾

Learning Health System >



Switzerland



Swiss Learning Health System

The Swiss Learning Health System (SLHS) is a collaborative project to establish a national platform for health systems and services research, policy and practice. The goal of the SLHS is to foster dialogue between stakeholders with the aim of developing and continuously integrating evidence-based solutions to current and future challenges in the health system. The SLHS relies on cyclical dynamics to identify issues, systematize relevant evidence, present alternative actions, select the best action, implement change, observe its consequences and, if necessary, revise and reshape responses.