

University of Michigan | Emergency Medicine Residency Program | Class of 2026



Julian Campillo Luna, MD, MHS
Yale SOM
MHS - Yale
BS - Univ. of Washington



Maia Dinsmore, MD
Warren Alpert MS of Brown
Univ.
BA - Colgate University



Madeleine King, MD
Virginia Commonwealth
University SOM
BS - College of Williams & Mary



Connor Knowles, MD
MI State University CHM
BS - University of Michigan



Kelly Laird, MD
University of Washington
BS - Gonzaga University



Samuel Malakhovsky, MD
Warren Alpert MS of Brown
Univ.
BS - Brown University



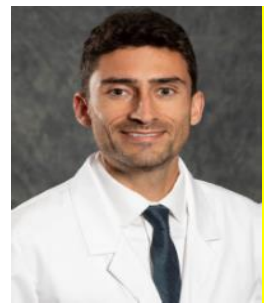
Alexis Maroney, MD
MI State University CHM
BS - Saginaw Valley State Univ.



Sharne Morrow, MD
Chicago MS at Rosalind
Franklin Univ. of Med
BS - Claflin University



Ella Purington, MD
Univ of Rochester SOM
BS - Univ. of Rochester



Morsi Rayyan, MD, MS
Central Michigan Univ. COM
BS/MS - Univ. of Michigan



Kaitlin Rose, MD
Central Michigan Univ. COM
BS - Oakland University



Elizabeth Silverman, MD
Univ. of California, San Diego
BS - Oakland University



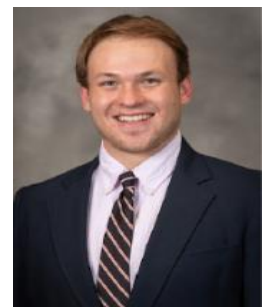
Anne Sung, MD
University of Connecticut SOM
BS - Univ. of Connecticut



Rachael Tesorero, MD, MS
University of Michigan MS
MS - Univ. of South Florida
BS - Univ of Michigan Dearborn



Alyssa Valentyne, MD
Univ. of Wisconsin SOM
BS - Univ. of Wisconsin
Oshkosh



Kevin Walsh, MD
University of Michigan MS
BA - Williams College