

MS COW 4

History

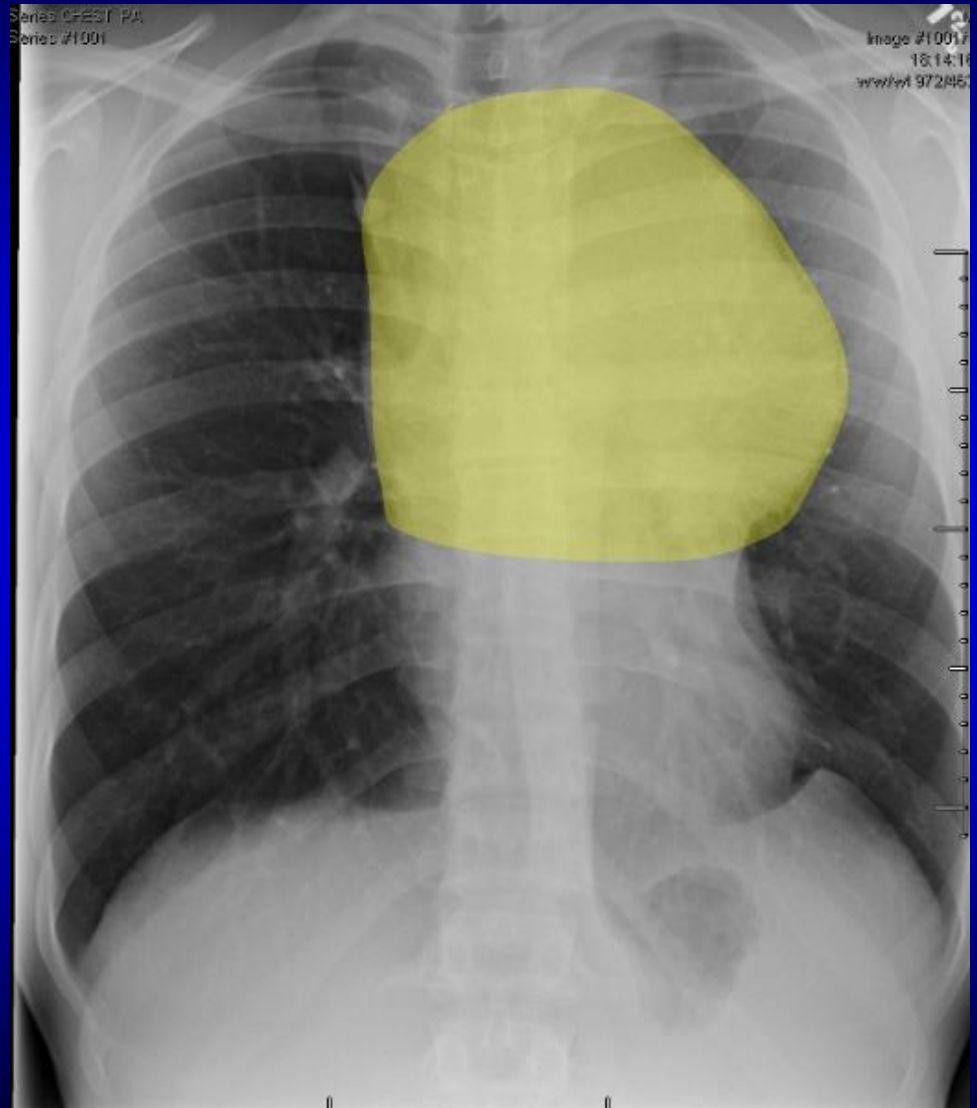
- 16 year old boy with progressive shortness of breath for several weeks. On further questioning he is also more tired than usual and has had occasional fevers.

CXR

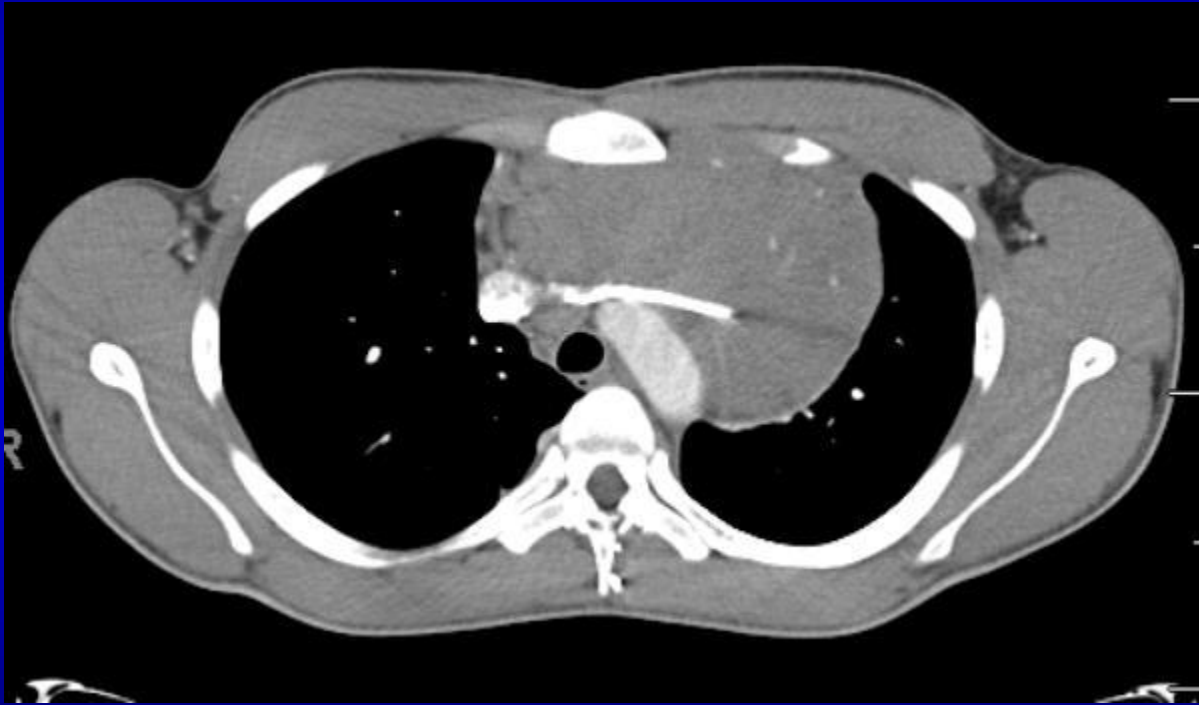


CXR

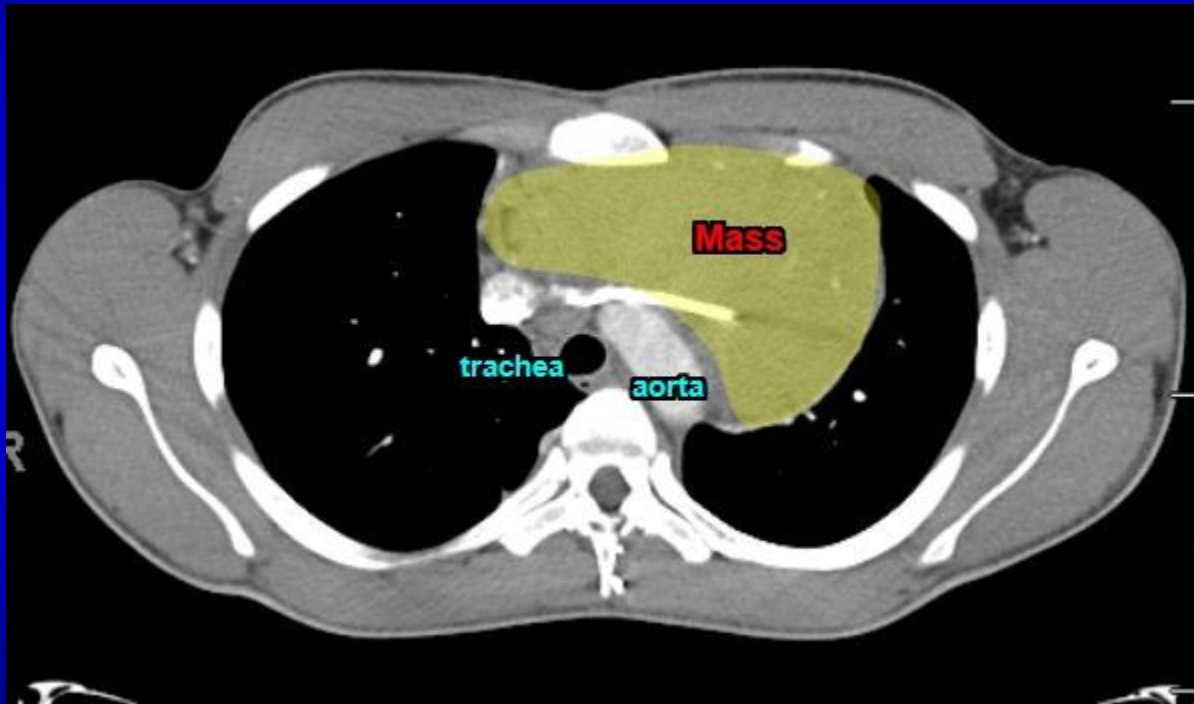
- Abnormal mediastinal contour



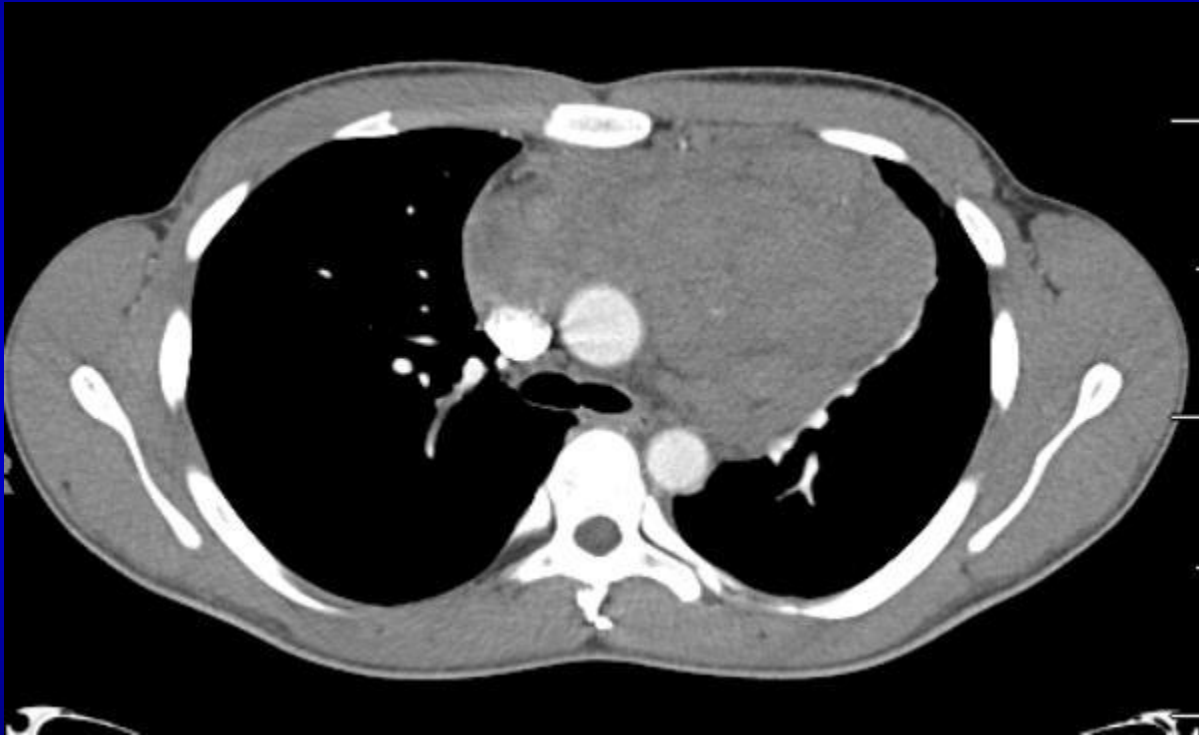
Chest CT (axial image)



Chest CT (axial image)



Chest CT (axial image)



Chest CT (axial image)



Chest CT (sagittal image)

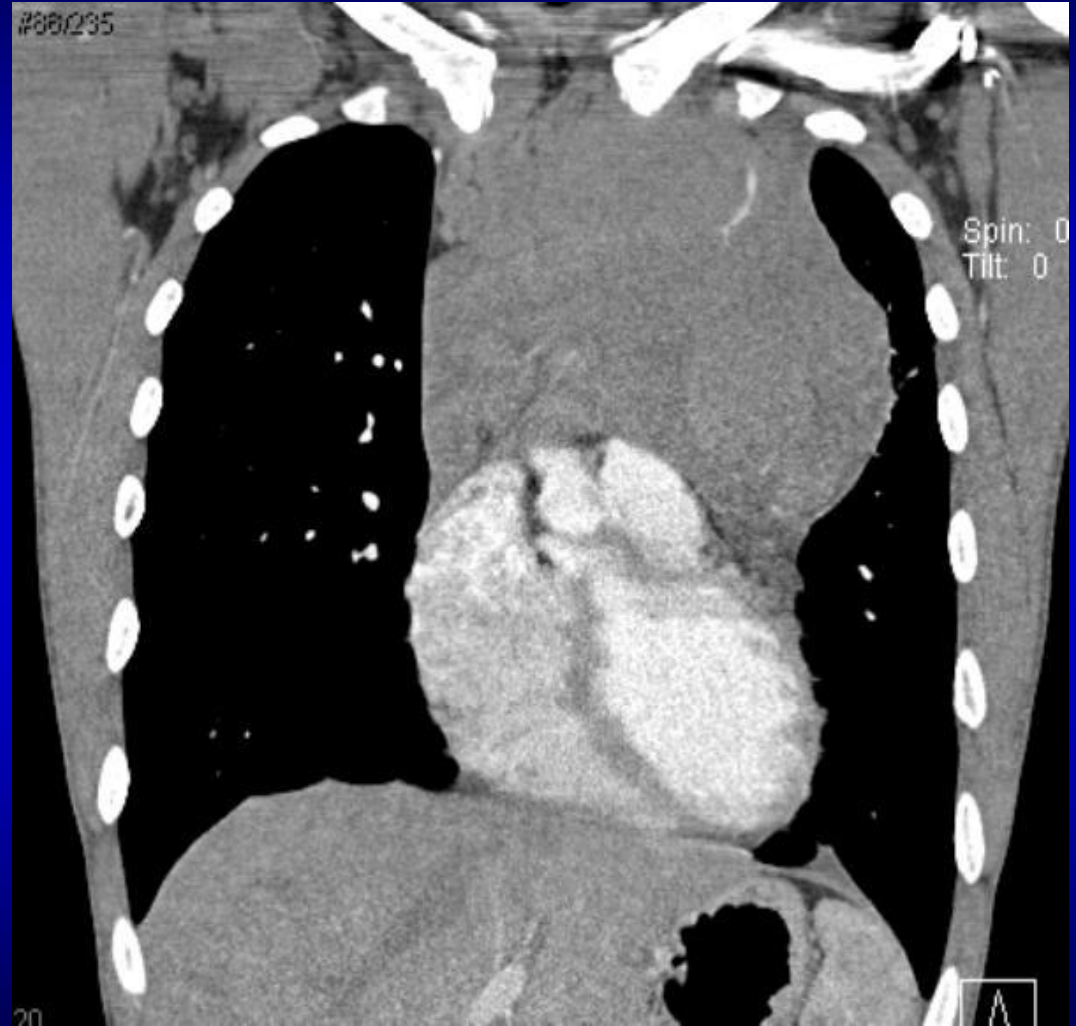


Chest CT (sagittal image)



Chest CT (coronal image)

- Correlates well with the initial chest radiograph



Findings

- CXR
 - abnormal contour of the mediastinum consistent with a mass
- Chest CT
 - Large, lobulated anterior mediastinal mass

Differential Diagnosis

- Anterior mediastinal mass:
- THE FOUR "T"'s
- 1) Thymoma
- 2) Teratoma
- 3) Thyroid gland (i.e. goiter -- unlikely in a young man!)
- 4) "Terrible" lymphoma

Diagnosis

Lymphoma

Discussion

- The mediastinum is divided into 4 compartments
 - Anterior
 - Middle
 - Posterior
 - Superior
- Localizing a mediastinal mass into the correct compartment can help narrow the differential diagnosis

Discussion

- Anterior mediastinum
 - The 4 T's (thymus, teratoma, thyroid, “terrible” lymphoma)
- Middle
 - Abnormal lymph nodes, airway or esophagus lesions
- Posterior
 - Neurogenic tumors, bone tumors